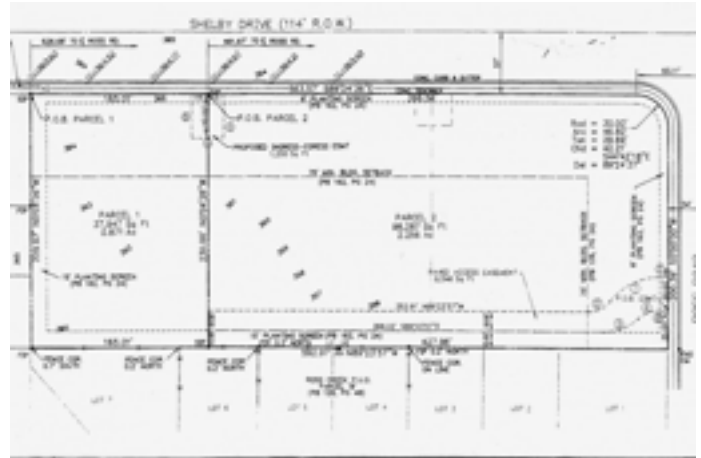


Shelby Drive at Ross Road

Located at the intersection of Shelby Drive and Ross Road



Property Information

- Great Retail Location
- Strong Demographics
- High population density and average household incomes
- 2 acres on a Hard Corner (Traffic Light)
- Price psf: \$8.50
- Total Price \$833,085
- Zoned CL

Demographics	1 Mile	3 Miles	5 Miles	10 Miles
Population Data	14,278	81,565	162,669	—
Avg. Household Income	\$74,703	\$72,546	\$75,137	—
Households	4,786	29,815	60,178	—

Traffic Data

Street	Vehicles per Day
Shelby Drive	25,925
Ross Road	6400

Leasing Agents

Jennifer Stewart jennifer@gillprop.com Office: (901) 758-1100 Cell: (901) 652-3778	Patty Bullock patty@gillprop.com Office: (901) 758-1100 Cell: (901) 488-1008
---	--